

MANUFACTURING

Comprehensive Legal Support for a Complex, Fast-Moving Industry

Manufacturers operate in an increasingly challenging environment—tight timelines, evolving regulations, complex supply chains and constant innovation. Barley Snyder's Manufacturing Industry Group understands these pressures. That's why we offer tailored, cross-disciplinary legal support to help you stay ahead, minimize risk, and focus on what you do best: designing, producing, and selling your products.

We work as strategic legal partners—providing proactive guidance before issues arise, not just after a contract is signed or a dispute arises. For many clients without in-house counsel, we serve as a trusted outside legal team, delivering timely advice and practical solutions across all aspects of their operations.

A Team that Understands Manufacturing

Our attorneys have considerable experience working with manufacturing clients across all sectors—industrial, food and agriculture, consumer goods, corrugated, chemicals, mechanical and components, automotive, and much more. We offer focused insight and practical legal solutions at every stage of the manufacturing process, from raw good procurement to finished product delivery.

Our integrated team covers a wide range of legal services, including:

- **Supply Chain & Commercial Agreements**—Development, supply, distribution, and logistics agreements tailored to your business relationships and operational realities.
- **Contract Review & Negotiation**—We help you avoid pitfalls by providing state-of-the-art forms, and reviewing contracts before signed, ensuring your interests are protected from day one.
- **Raw Material & Sourcing Contracts**—Support with supplier agreements, import/export terms and global procurement.
- **Labor & Employment**—Guidance for managing a labor-intensive workforce, from onboarding to workplace policies and dispute resolution.
- **Intellectual Property / Product Development**—Protection for your R&D investments through patents, trademarks, copyrights, and licensing.
- **Immigration Law**—Legal support for workforce mobility and foreign talent acquisition.
- **Litigation & Dispute Resolution**—When issues arise, we're ready to defend your interests in negotiations, mediation, arbitration, or litigation in court.
- **Environmental Compliance & PFAS**—Advice on regulatory compliance and environmental risk management, including PFAS-related liability.
- **Packaging & Labeling**—Counsel on packaging compliance, safety standards and labeling requirements.

Let's Build Something Stronger Together

Too often, we see manufacturers come to us after the deal is done—when a confidentiality agreement is

already signed or a poorly drafted contract has become a costly problem. We're here to change that. Our team makes it easy to consult legal counsel early, helping you make informed, strategic decisions before potential issues emerge.

By engaging legal counsel early in the process, you enhance clarity, mitigate risk and position yourself for more favorable outcomes ultimately safeguarding your business interests and avoiding costly complications down the line.

Whether you're a startup business expanding operations or an established enterprise navigating supply chain shifts, our Manufacturing Industry Group is ready to support your legal needs with practical advice, responsive service and expansive industry knowledge.

CHAIR:



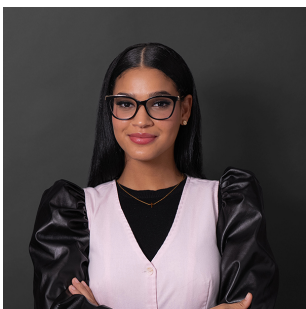
Christopher A. Naylor

Partner

Tel: (717) 852-4997

Email: cnaylor@barley.com

RELATED PROFESSIONALS:



Celia S. Acosta

Paralegal

Tel: 717-718-7583

Email: cacosta@barley.com



Catherine T. Begley

Counsel

Tel: (484) 339-4149

Email: cbegley@barley.com



Kimberly J. Decker

Partner

Tel: (717) 399-1506

Email: kdecker@barley.com



Jeremy D. Frey
Partner
Tel: (717) 852-4983
Email: jfrey@barley.com



Susanna M. Fultz
Associate
Tel: (610) 370-8117
Email: sfultz@barley.com



Brandon R. Griest
Associate
Tel: (717) 399-1524
Email: bgriest@barley.com



Charles B. Haws
Counsel
Tel: (610) 898-7162
Email: chaws@barley.com



Andrew J. Mahon
Associate
Tel: (717) 848-0041
Email: amahon@barley.com



Kevin C. Myhre
Partner
Tel: (484) 318-2490
Email: kmyhre@barley.com



Christopher A. Naylor
Partner
Tel: (717) 852-4997
Email: cnaylor@barley.com



Thomas J. Nehilla
Partner
Tel: (717) 231-6630
Email: tnehilla@barley.com



Drake D. Nicholas
Partner
Tel: (717) 231-6622
Email: dnickolas@barley.com



John T. Reed
Partner
Tel: (717) 399-1531
Email: jreed@barley.com



Rebecca M. Shanaman
Counsel
Tel: 717-848-0042
Email: rshanaman@barley.com



Martin R. Siegel
Counsel
Tel: (717) 718-7581
Email: msiegel@barley.com



Alice Solomon
Associate
Tel: (610) 376-6659
Email: asolomon@barley.com



Curtis J. Tokach
Associate
Tel: (717) 285-6497
Email: ctokach@barley.com



Justin A. Tomevi
Partner
Tel: (717) 852-4977
Email: jtomevi@barley.com



Paul F. Troisi
Partner
Tel: (610) 370-8129
Email: ptroisi@barley.com